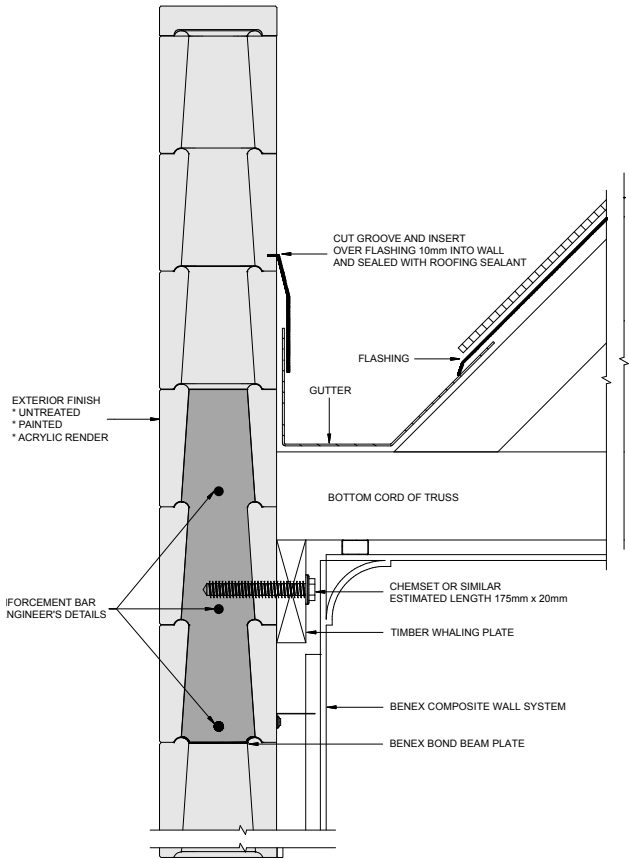


# Typical Connection Detail

## TYPICAL BENEX CONNECTION DETAIL FOR BOTTOM CORD CONNECTION TO REINFORCED PARAPET WALL



NOTE: THIS IS A PRELIMINARY DESIGN THAT HAS NOT BEEN APPROVED BY A STRUCTURAL ENGINEER. ESTIMATED MAXIMUM OF 3 COARSE TO BE REINFORCED AND CORE FILLED.

There are no limits to what & where you can fix a structural element to a Benex Wall.

Simply by strengthening the appropriate area of Benex Wall with Concrete Core-fill, you can fix any building element to support Roof, Floor, Wall & other structural components. Always consult your Structural Engineer for specific details.