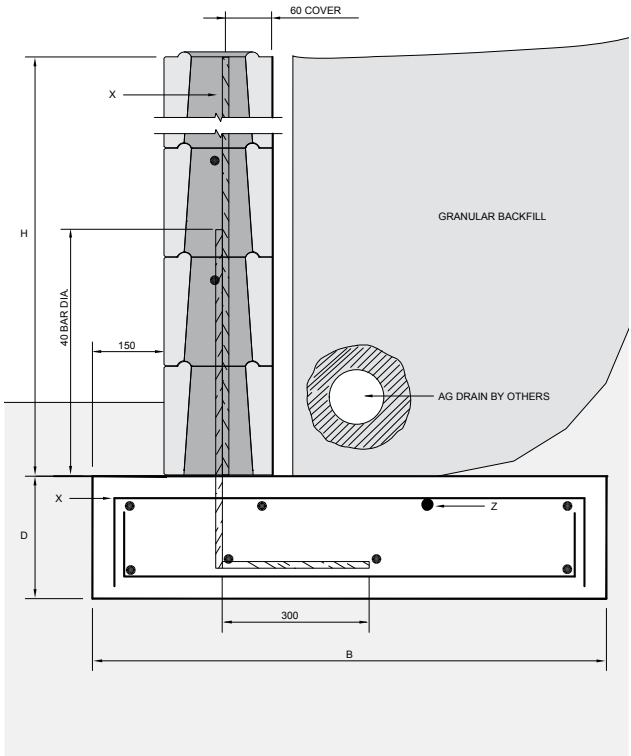


Block Retaining Detail

BLOCK RETAINING WALL RW2/SFC



Retaining Wall Schedule - RW2/SFC 200 Thick Blockwork

All horizontal reinforcement to be N12-400. UNO

Height H	Bredth B	Toe Depth D	Reinforcement X	Reinforcement Z	Design Bending Moment (kNm/M Run of Wall)
600 - 1000	800	300	N12-600 (450 LAP)	N12-300	3
1001 - 1500	1000	300	N12-600 (450 LAP)	N12-300	8.45
1501 - 2000	1400	300	N12-600 (450 LAP)	N12-300	18
2001 - 2400	1800	300	N16-300 (650 LAP)	N12-300	19.6

Provide N12 support bars in footing, same spacing as main footing reinforcement

Concrete F^c = 25MPa in wall

A Benex retaining wall is appropriate for low garden retaining walls up to higher engineered retaining walls. It can accept both horizontal and vertical reinforcing and can be core-filled to your engineers' requirements.

Dig Less, Build Faster with a Benex Retaining Wall System. Less Excavation, Less Back Fill, No Water Membranes & No Worksafe "Shoring". Reduces trade contractors required on site.